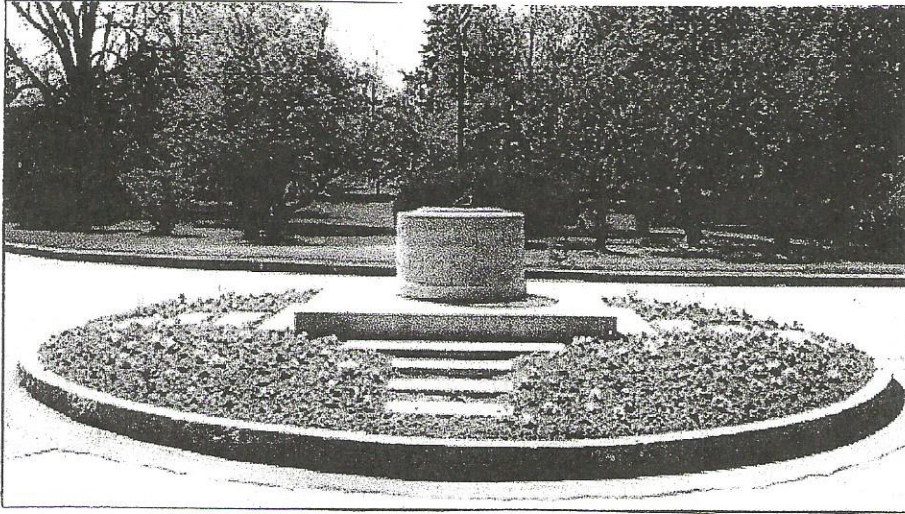


THE SUNDIAL MONUMENT



Located in the circle in the main drive, three hundred feet west of the main entrance, it was designed by Tiffany Studios of New York and donated to the cemetery by Poughkeepsie attorney Frederick Bernhard in 1923.

An article appearing in the Poughkeepsie Eagle on September 24, 1923 describes the unique work of art:

“It is massive, substantial, dignified and in its material aspect, carries a suggestion not of the rapid and evanescent flight of time, but of eternal, unmoved and unchanging values in the universe. This impression is conveyed by the size and the proportions of the whole creation and by the material in which it has been wrought. Within a grassy circle, four sets of approaching steps lead to a square platform of granite on which stands the carved granite pedestal weighing three tons, that bears the bronze dial. The granite is exceptional in that the usual gray is shot through with reds and greens and the stone will ultimately be softened by the weather into beautiful color-tones. It is known as Tiffany granite and is found only in a quarry at Cohasset, Massachusetts owned by the Tiffany Studios of New York City. Mr. Louis C. Tiffany has had general charge of the design.”

On the bronze dial are these words: "This sundial was presented to the Poughkeepsie Rural Cemetery A. D. 1923 by Frederick Bernhard. Vitae fugaces exhibit horas." which freely translates as "It Shows the Fleeting Hours of Life" a quotation French author Pierre Loti mentions in one of his books.

The bands along the side read "Time goes, you say? Ah, no! Alas, time stays, we go" a quotation taken from the writings of Austin Dobson and "What shadows we are and what shadows we pursue" lifted from a speech delivered by Edmund Burke.

A second sundial was donated to replace the original if it should become damaged and it is now on view in the Lawn Crypt Garden west of the Community Mausoleum. It sits on a plain stone pedestal devoid of any ornate carvings.